

LEGEND

TREE CONDITION CATEGORIES

- A TREES OF HIGH VALUE AND QUALITY
- B TREES OF MODERATE VALUE AND QUALITY
- C TREES OF LOW QUALITY AND VALUE
- D TREES OF VERY LOW VALUE AND QUALITY TO BE REMOVED IN THE INTERESTS OF SOUND ARBORICULTURAL MANAGEMENT

TREE CONSTRAINTS

- HEDGEROWS
- PLANNING BOUNDARY

Trees shown on arboricultural survey drawings are located approximately only. Exact locations may need to be ascertained if the trees are to be retained.

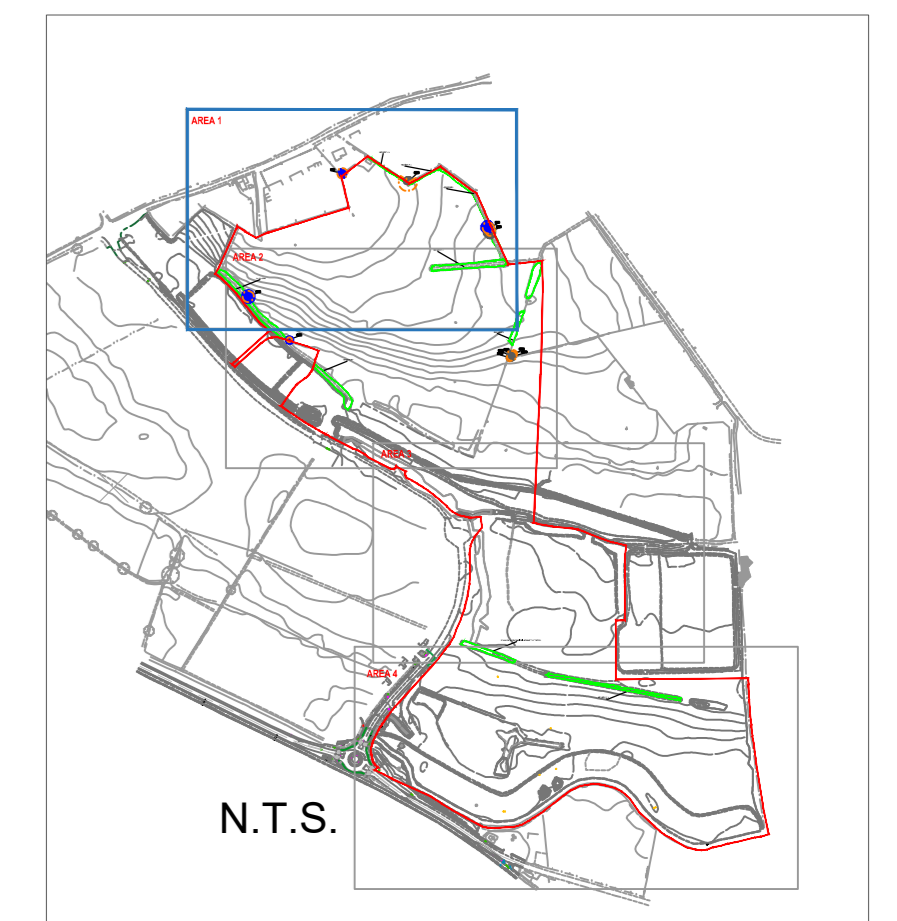
Drawing to be interpreted with reference to Tree Survey document.

Hedgerow colour does not denote category. Refer to Tree Survey documents for details on individual hedgerow composition and condition.

Tree constraints shown are calculated from guidelines contained within BS5837:2012 within dimensions contained within Section 6 of the Tree Survey document. This outline should not be interpreted as the exact extent of root spread; however it is considered the optimal area to be retained free of developmental impacts.

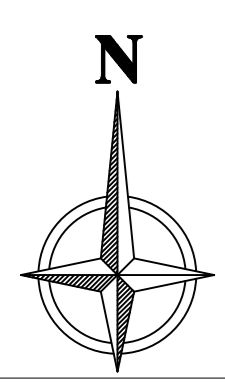
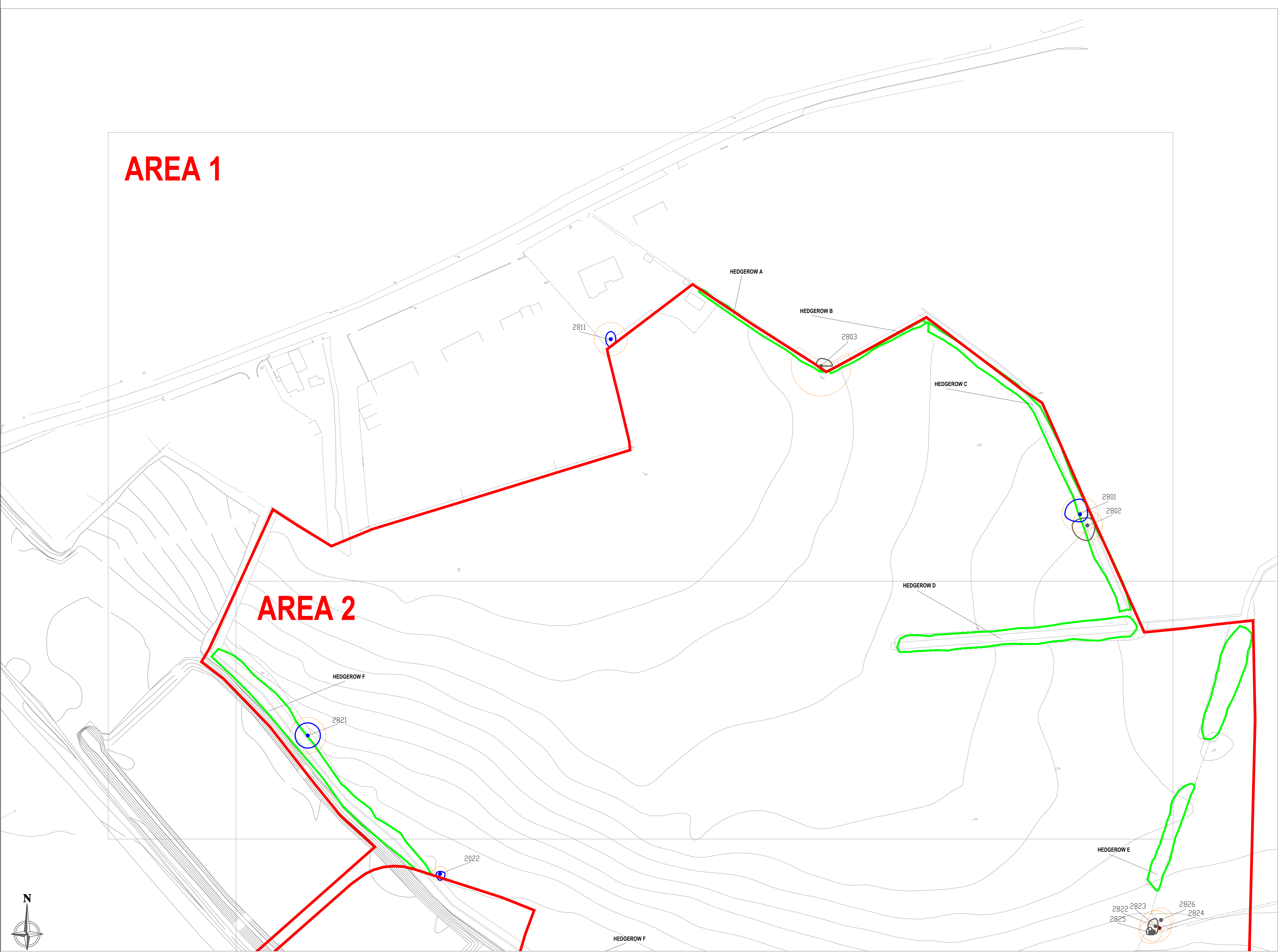
Natural and/or man-made barriers such as waterlogged soil or buildings may restrict the spread of tree roots. Crown spreads may also prove to be a constraint particularly where crown reduction may not be possible.

The constraints area shown on this drawing are therefore a guide only. An on-site assessment should be undertaken in the event of any developments being planned within the areas shown for retained trees.



AREA 1

AREA 2



REV.	DATE	DESCRIPTION
B	18/11/19	Scale change

CMK Consultants & Surveyors Ltd.		PROJECT:	RESIDENTIAL DEVELOPMENT, NEWTOWNADYGHY, KILCOCK, CO. KILDARE	JOB NO.:	TH1504
CLIENT:	McJannet Realty Homes	DRAWING:	TREE SURVEY & CONSTRAINTS (1 of 4)	DATE:	13-12-19
STATUS:	PLANNING	DRAWN BY:	DAVID WATSON	SCALE:	1:500 @ A0
		CHECKED BY:	DAVID WATSON	DATE:	13/12/19
		DATE:	13/12/19	DRAWING NO.:	102
				REVISION:	1